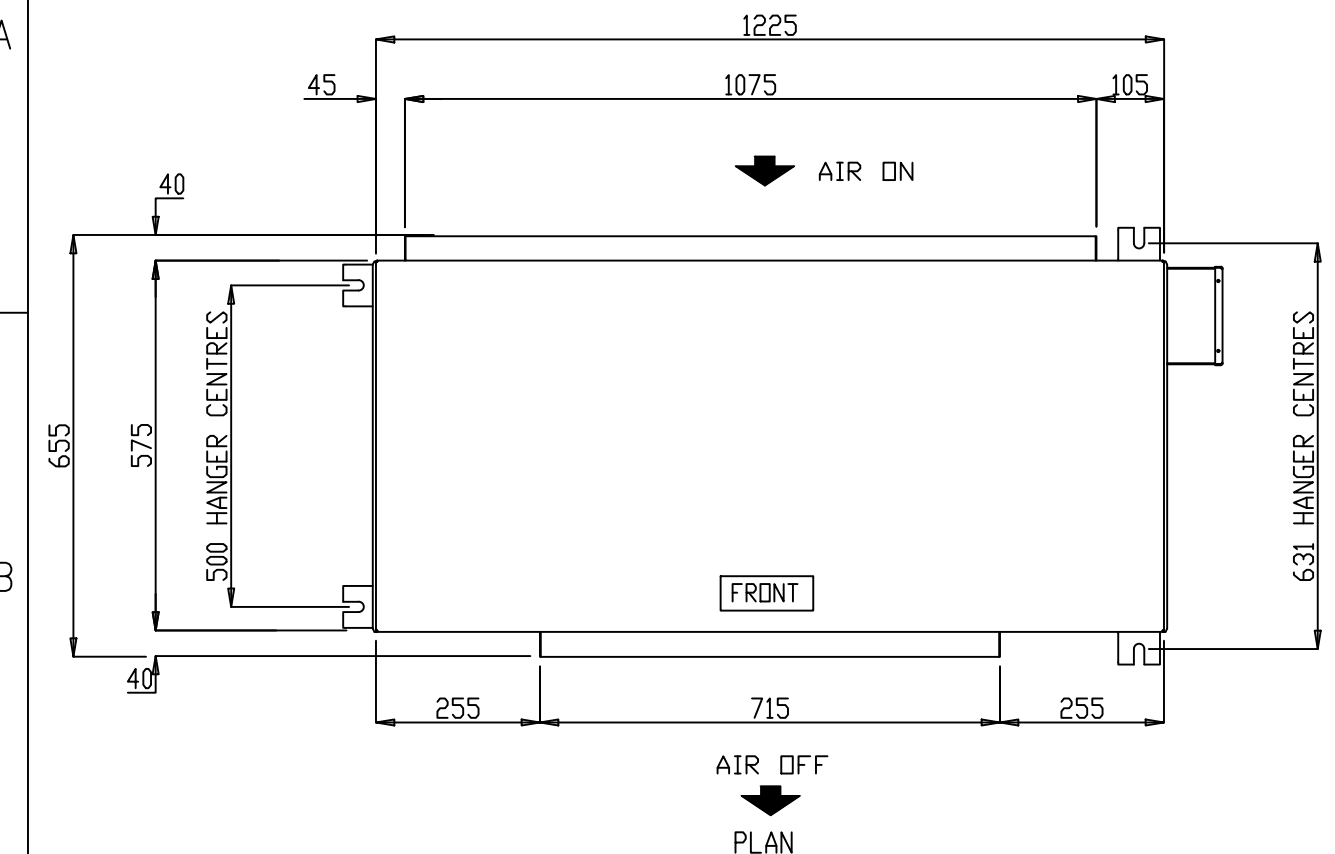
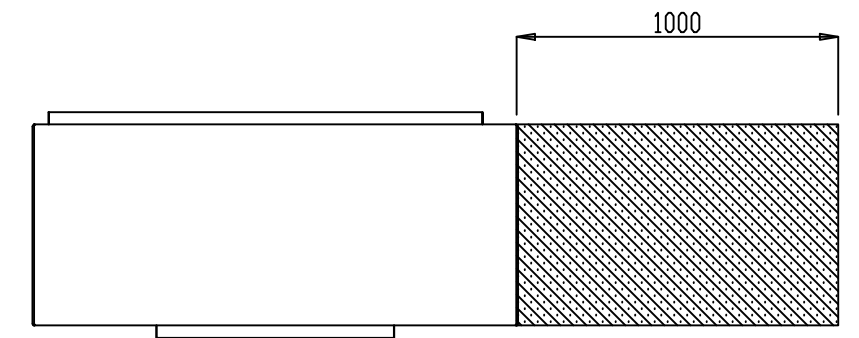


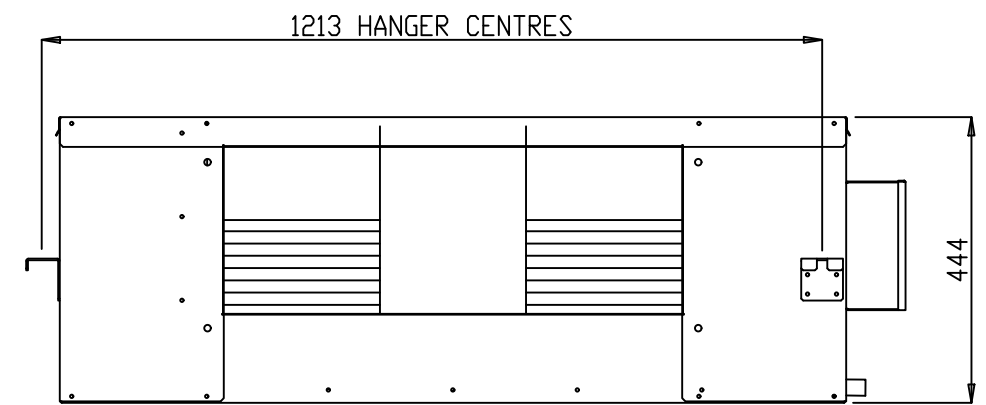
1 2 3 4 5 6



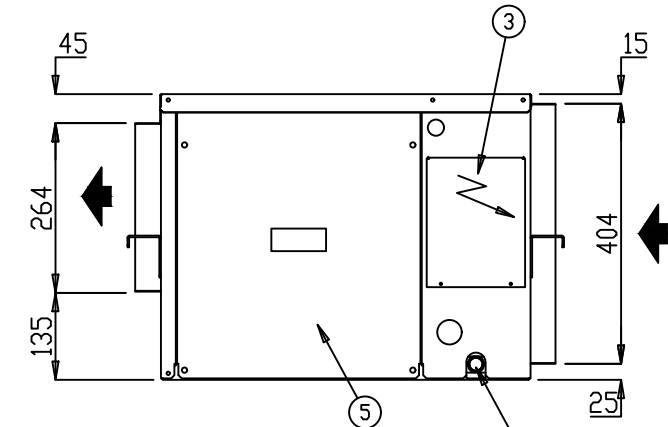
- NOTES:**
1. GENERAL ARRANGEMENT OF A HORIZONTAL SINGLE STAGE INDOOR UNIT
 2. POWER AND FIELD CABLE ENTRIES, 1 x 20 ϕ
 3. ELECTRICAL PANEL
 4. CONDENSATE OUTLET 25 ϕ
 5. ACCESS PANEL
 6. REFER TO INSTALLATION AND OPERATIONAL MANUAL FOR PIPE SIZING



CLEARANCE DETAIL



FRONT ELEVATION



R/H ELEVATION

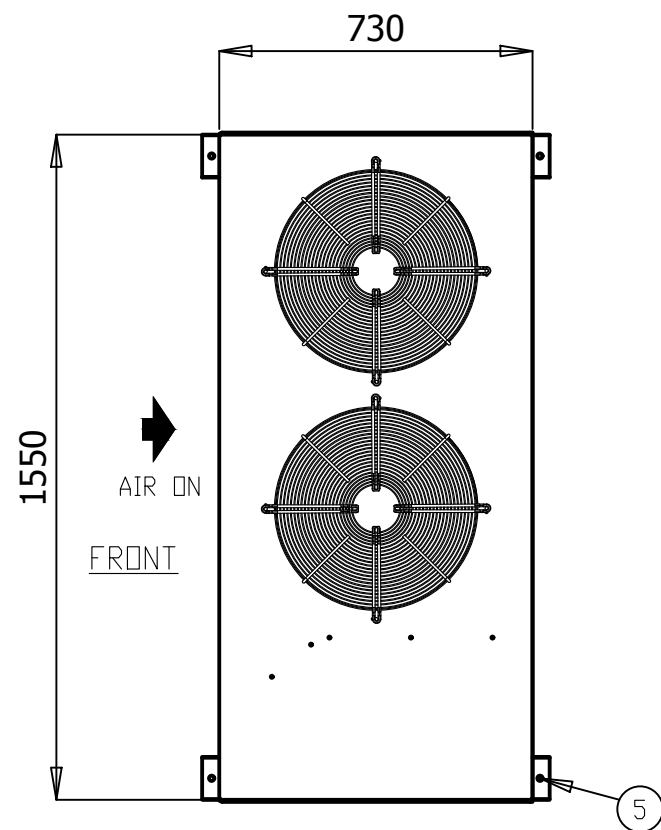
- ALL DIMENSIONS IN mm.
- GENERAL TOLERANCE ± 1 mm.
- DO NOT SCALE DRAWING.
- MASTER DRAWINGS ARE HELD ELECTRONICALLY. ANY COPY IS DEEMED UNCONTROLLED AND THEREFORE NOT NECESSARILY THE LATEST REVISION.
- ALL INFORMATION REMAINS THE PROPERTY OF THE COMPANY.

GENERAL ARRANGEMENT

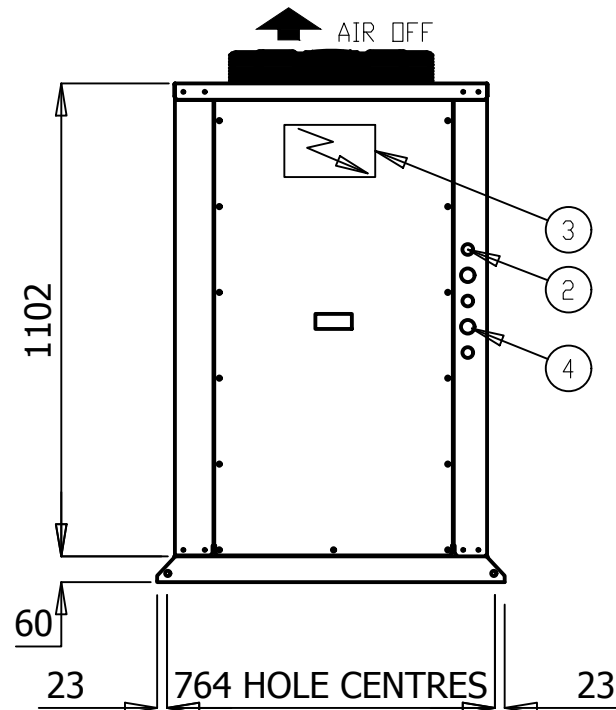
S012ILR1SA- S015ILR1SA- S018ILR1SA-

www.apacair.com.au ABN: 74 005 138 769

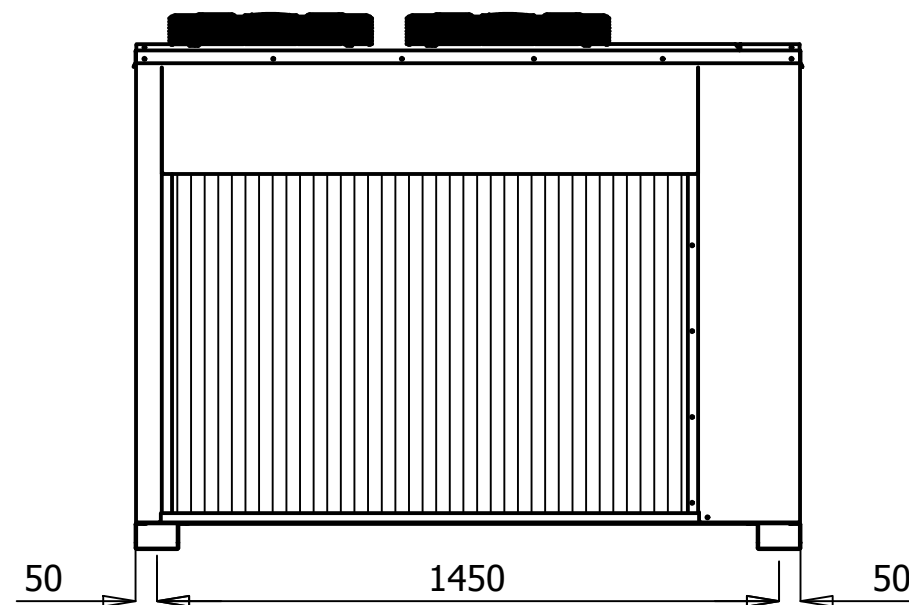
	REVISION					REVISED NAMEPLATE WITH APAC DETAILS				
	DRAWN		MT	DRAWING No.		A4				
	DATE		29.12.14	GAD0031						
	SCALE		N.T.S.							
CHECKED		HA	APP'D.	CM	REV.	B				



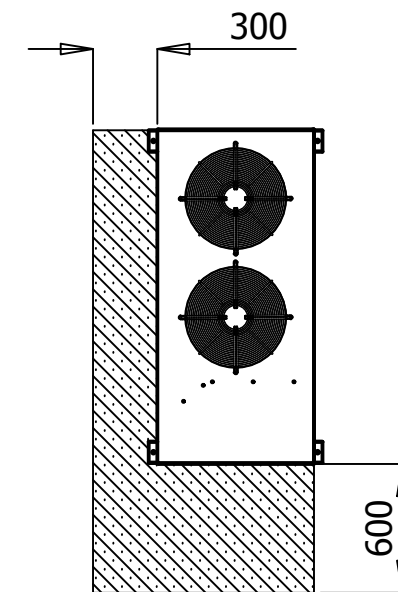
PLAN VIEW



RH ELEVATION



FRONT VIEW



NOTES:

1. GENERAL ARRANGEMENT OF A OUTDOOR SPLIT AIR COOLED VERTICAL UNIT
2. POWER AND FIELD CABLE ENTRIES, 1 x 32 ϕ AND 2 x 25 ϕ
3. ELECTRICAL PANEL LOCATED BEHIND SERVICE ACCESS
4. FIELD PIPE CONNECTIONS
5. UNIT BASE 4 x 16 ϕ FIXING POINTS
6. REFER TO INSTALLATION AND OPERATIONAL MANUAL FOR PIPE SIZING

- ALL DIMENSIONS IN mm.
- GENERAL TOLERANCE ± 1 mm.
- DO NOT SCALE DRAWING.
- MASTER DRAWINGS ARE HELD ELECTRONICALLY. ANY COPY IS DEEMED UNCONTROLLED AND THEREFORE NOT NECESSARILY THE LATEST REVISION.
- ALL INFORMATION REMAINS THE PROPERTY OF THE COMPANY.

GENERAL ARRANGEMENT

S0120VR3SA- S0150VR3SA- S0180VR3SA- S0200VR3SA- S0230VR3SA-

www.apacair.com.au

ABN: 74 005 138 769

<p>ATLANTIC DR. KEYSBOROUGH VIC 3173 1300 555 545</p>	REVISION				REVISED NAMEPLATE WITH APAC DETAILS			
	DRAWN	MT	DRAWING No.		A4			
	DATE	19.07.14	GAD0025					
	SCALE	N.T.S.						
CHECKED	HA	APP'D.	CM	REV.	B			

TECHNICAL DATA SHEET

MODEL NUMBER	Indoor	S012ILR1SA-	S015ILR1SA-	S018ILR1SA-	S020ILR1SA-	S023ILR1SA-	
	Outdoor	S012OVR3SA-	S015OVR3SA-	S018OVR3SA-	S020OVR3SA-	S023OVR3SA-	
MEPS REGISTRATION NUMBER		AAC3201	AAC3237	AAC3203	AAC3236	AAC3204	
OUTDOOR SECTION	CAPACITY						
	Cooling	kW TOTAL*	12.57	15.54	17.43	20.53	22.89
		kW SENSIBLE*	9.70	12.13	13.45	15.88	18.17
		EER (kW / ikW)*	3.50	3.70	3.49	3.60	3.32
	Heating	kW TOTAL	11.90	14.70	16.70	20.60	22.50
		COP	3.66	3.87	3.71	3.81	3.63
	CAPACITY STEPS (%)		0/100	0/100	0/100	0/100	0/100
	COMPRESSOR						
	TYPE		SCROLL	SCROLL	SCROLL	SCROLL	SCROLL
	STARTER TYPE		D.O.L (Opt Soft/Start)	D.O.L (Opt Soft/Start)	D.O.L (Opt Soft/Start)	D.O.L (Opt Soft/Start)	D.O.L (Opt Soft/Start)
	PHASE		3Ø	3Ø	3Ø	3Ø	3Ø
	No. OFF		1	1	1	1	1
	PROTECTION DEVICES		HP SWITCH, LP SWITCH, MOTOR OVERLOAD'S				
	ALL COMPRESSORS HAVE		CRANKCASE HEATER				
	FAN						
	TYPE		AXIAL	AXIAL	AXIAL	AXIAL	AXIAL
	ikW (MAX INPUT)		0.19	0.19	0.19	0.27	0.27
	PHASE		1Ø	1Ø	1Ø	1Ø	1Ø
	No. OFF		2	2	2	2	2
	FAN SPEED CONTROL		VARIABLE SPEED	VARIABLE SPEED	VARIABLE SPEED	VARIABLE SPEED	VARIABLE SPEED
	HEAT EXCHANGER						
	TYPE		PLATE FIN COIL	PLATE FIN COIL	PLATE FIN COIL	PLATE FIN COIL	PLATE FIN COIL
	NOM. AIRFLOW l/s		-	-	-	-	-
	REFRIGERANT SYSTEM						
	TYPE		R410A				
	FACTORY CHARGE PER CIRCUIT (KG)		3.95	5.3	5.7	7.3	6.8
	No. OF CIRCUITS		1	1	1	1	1
	REFRIGERANT CONTROL		TXV				
ALL SYSTEMS INCLUDE		DRIERS & SIGHT GLASSES					
DIMENSIONS							
H X W X D (mm)		1162 x 730 x 1550					
WEIGHT							
OPERATING KG		211	214	217	220	223	
SHIPPING KG		216	219	222	225	228	
ELECTRICAL							
POWER SUPPLY		415v / 3Ø / 50hz					
FLA / RLA (Amps)		9.7 / 6.5	12 / 7.5	13.5 / 9.1	17.4 / 9.4	17.4 / 10.3	
INDOOR SECTION	FAN						
	TYPE		CENTRIFUGAL	CENTRIFUGAL	CENTRIFUGAL	CENTRIFUGAL	CENTRIFUGAL
	ikW (MAX INPUT)		0.63	0.63	0.63	0.96	0.96
	PHASE		1Ø	1Ø	1Ø	1Ø	1Ø
	No. OFF		1	1	1	1	1
	FAN SPEED CONTROL		VARIABLE SPEED	VARIABLE SPEED	VARIABLE SPEED	VARIABLE SPEED	VARIABLE SPEED
	HEAT EXCHANGER						
	TYPE		PLATE FIN COIL	PLATE FIN COIL	PLATE FIN COIL	PLATE FIN COIL	PLATE FIN COIL
	NOM. AIRFLOW l/s		625	835	875	990	1120
	EXT STATIC pa		100				
	DIMENSIONS						
	H X W X D (mm)		444 x 1225 x 655			455 x 1500 x 625	
	WEIGHT						
	OPERATING KG		70			74	
	SHIPPING KG		73			77	
	ELECTRICAL						
POWER SUPPLY		230v / 1Ø / 50hz					
FLA / RLA (Amps)		4.4 / 2.1	4.4 / 3.8	4.4 / 4.0	5.9 / 4.2	5.9 / 4.8	
COMBINED SECTIONS	ELECTRICAL						
	H.P. CUT OUT / IN kPa		4500 / 3450	4500 / 3450	4500 / 3450	4500 / 3450	4500 / 3450
	L.P. CUT OUT / IN kPa		175 / 345	175 / 345	175 / 345	175 / 345	175 / 345
	NOM. R.L.A. (TOTAL SYSTEM)		8.6	11.3	13.1	13.6	15.1
	MAX. F.L.A. (TOTAL SYSTEM)		14.1	16.4	17.9	23.3	23.3
	GENERAL						
	CABINET		GALVANISED SHEET STEEL				
	INSULATION		ALUMINIUM FOIL FACED POLYETHYLENE ACOUSTIC INSULATION				
	EXTERNAL FINISH		POLYESTER POWDER COAT - COLOUR LIGHT GREY AS STANDARD - OPTIONS AVAILABLE				
	INDOOR AND OUTDOOR PIPE CONNECTION						
LIQUID mm (inch)		9.5 (3/8")	9.5 (3/8")	9.5 (3/8")	9.5 (3/8")	9.5 (3/8")	
GAS mm (inch)		15.9 (5/8")	19.1 (3/4")	19.1 (3/4")	22.2 (7/8")	22.2 (7/8")	
ADDITIONAL REFRIGERATION CHARGE AND FIELD PIPING CONNECTIONS							
REFER TO INSTALLATION AND OPERATION MANUAL							
NOISE LEVELS [Based on condenser fan's sound data]							
SOUND POWER db(A)		61.7	61.7	61.7	66.6	66.6	

Note:

*Performance excludes ikW of evaporator fan motor.

R.L.A - Run Load Amps are based on current drawn at nominal conditions

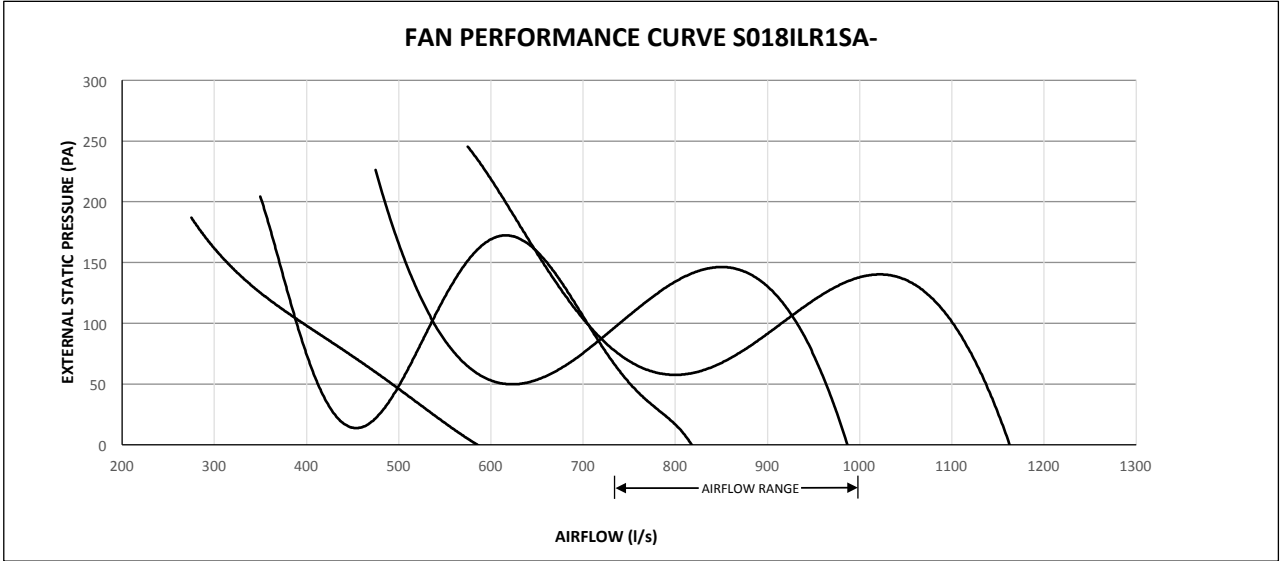
F.L.A - Full Load Amps are based on the overload settings [Max Current] of all Compressor and Fan Motor(s).

Date	Document #	Approved By	Revision
1/6/18	TDS0022	CM	H

NOTE: Due to continuous improvement Rinnai Australia Pty Ltd reserve the right to change details without notice.

FAN PERFORMANCE CURVE

S018ILR1SA-



Date	Document #	Approved By	Revision
29.05.18	FPC00030	CM	B

NOTE: Due to continuous improvement Rinnai Australia Pty Ltd reserve the right to change details without notice.



SOUND DATA

MODEL NUMBER

S018ILR1SA- / S018OVR3SA-

Outdoor Fan

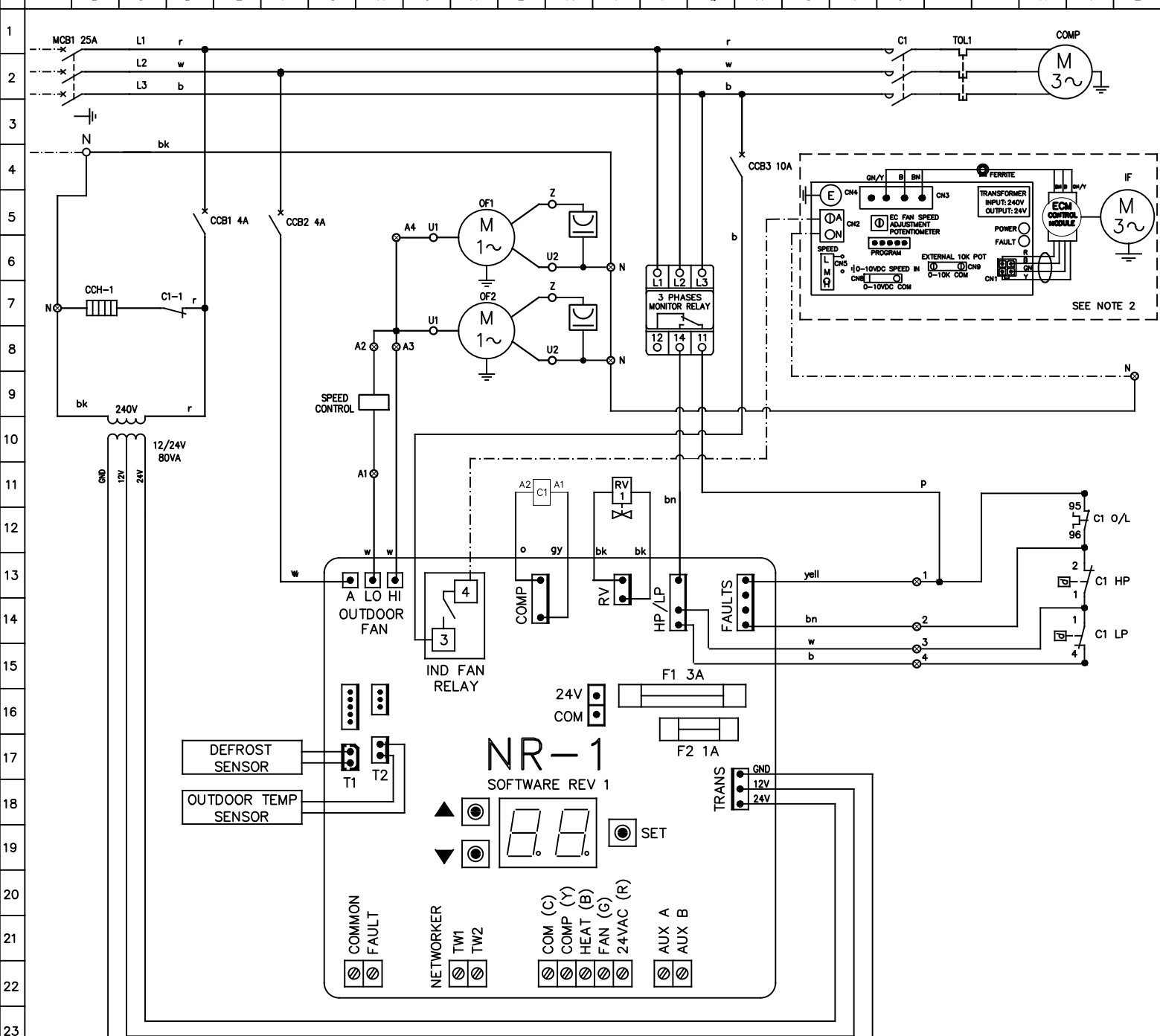
Sound Power Level dB(A)	Octave band Centre Frequency (Hz), dB						
	125	250	500	1k	2k	4k	8k
61.7	66.4	58.6	54.6	56.6	56	50.5	41.9

Indoor Fan

Sound Power Level dB(A)	Air Flow (l/s)	Octave band Centre Frequency (Hz), dB						
		125	250	500	1k	2k	4k	8k
76.2	890	73.7	74.5	73.7	71.2	67.8	63.7	58.7

Date	Document #	Approved By	Revision
01.06.18	SD0036	CM	B

NOTE: Due to continuous improvement Rinnai Australia Pty Ltd reserve the right to change details



		TYPE	ID	SETTING	UPON COMPLETION OF SETTING THE PARAMETERS, SYSTEM (SAFETY SWITCHES, OVERLOADS, LOCKOUT) MUST BE TESTED TO ENSURE CORRECT OPERATION.
INDOOR FAN OPERATION DURING DEFROST PARAMETER SETTING		INSTALLER	5	1	
FAULT INPUT PARAMETER SETTING		SERVICE	11	1	
			12	0	
			13	0	
			14	1	

- NOTES: 1. THERMAL OVERLOAD RELAYS, HP SWITCH AND LP SWITCH ARE AUTO RESET, UNLESS OTHERWISE STATED.
 2. FOR SPLIT SYSTEMS, OTHERS TO INSTALL ISOLATOR AND FIELD WIRING FOR INDOOR FAN TO INDOOR FAN MOTOR RELAY IN OUTDOOR SECTION.
 3. ALL FIELD WIRING IS THE RESPONSIBILITY OF THE INSTALLING CONTRACTOR, AND MUST COMPLY WITH AS/NZS 3000 AND LOCAL RULES.

WARNING: THE SOFTWARE OF THE NR-1 CONTROLLER IS NOT DESIGNED TO FUNCTION AS A PRIMARY PERSONAL SAFETY DEVICE, AS CONNECTED EQUIPMENT CAN START AUTOMATICALLY WITHOUT WARNING. ALSO OPENING THERMOSTAT CONTACTS OR SWITCHING OFF ON THE NC4 NETWORKER MAY NOT CAUSE THE EQUIPMENT TO STOP. THE ELECTRONIC CONTROLLER HAS A BUILT IN AUTOMATIC RESET FAULT LOCKOUT FUNCTION AND MAY RESTART THE SYSTEM AUTOMATICALLY WITHOUT WARNING.
 OUTDOOR FAN MOTORS HAVE INTERNAL OVERLOADS AND MAY RESTART AUTOMATICALLY.

IMPORTANT NOTE: THE SCROLL COMPRESSOR IS ROTATIONALLY SENSITIVE, IF NOISY OR NOT PUMPING, CHANGE ANY OF TWO PHASES.

LEGEND		LEGEND		COLOUR CODE	COMPRESSOR (EACH)	MODEL: S0180VR3SA-L		
COMP	COMPRESSOR CONTACTOR	---	FIELD WIRING	r	RED	OPTIONS		
TOL	THERMAL OVERLOAD	---	MAINS/CONTROL WIRING	w	WHITE			DESCRIPTION
CCH	THERMAL OVERLOAD CRANK CASE HEATER	⊗	CONTROL PARAMETER SWITCHBOARD TERMINAL	b	BLUE	REF	STANDARD	
RV1	REVERSING VALVE	○	CONTROL PARAMETER SWITCHBOARD TERMINAL	bk	BLACK	A		
HP	HIGH PRESSURE SWITCH			bn	BROWN			
LP	LOW PRESSURE SWITCH			o	ORANGE			
MCB	MINIATURE CIRCUIT BREAKER			p	PINK			
CCB	CONTROL CIRCUIT BREAKER			pl	PURPLE			
				gy	GREY			
				yell	YELLOW			
					kW		4.15	
					RATED CURRENT		11.80	
					O/L SETTING		13.00	
					FANS (EACH)		kW	FLA
					OUTDOOR		0.19	0.86
					INDOOR		0.63	4.40

DATE: 24/06/2018
 DWN: S.P APPD ENG
 REV: A GRID B246
 DWG No: EWS02221